

ADULT ASSEMBLY REQUIRED

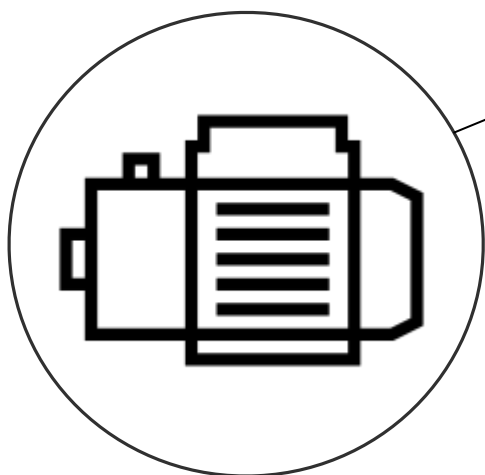
Warning

- Read the instructions carefully before use, and follow the rules for safe operation. Keep these instructions for future reference.
- This appliance can be used by children aged 8 and above and persons with reduced physical sensory, or mental capabilities, or lack of experience and knowledge if they have been given supervision or instruction concerning use of the appliance in a safe way, and understand the hazards involved.
- Children shall not play with the appliance. Cleaning and user maintenance shall not be carried out by children without supervision.
- The operator shall take full responsibility for personal injury, appliance damage, and/or other property losses caused by violation of safety cautions.

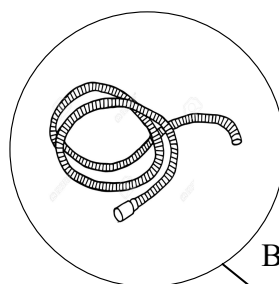
CAUTION

- Appliance is intended for clean, household water use only.
- Ensure that the appliance plug is not damaged and is dry before plugging into a 120 vac grounded outlet.
- Do not immerse or spray pressurized water on the exterior of the appliance.
- Keep appliance well ventilated.
- Water inside hose and appliance may be hot or under pressure. Turn off water supply first and use caution while disconnecting hose.

Package Contents



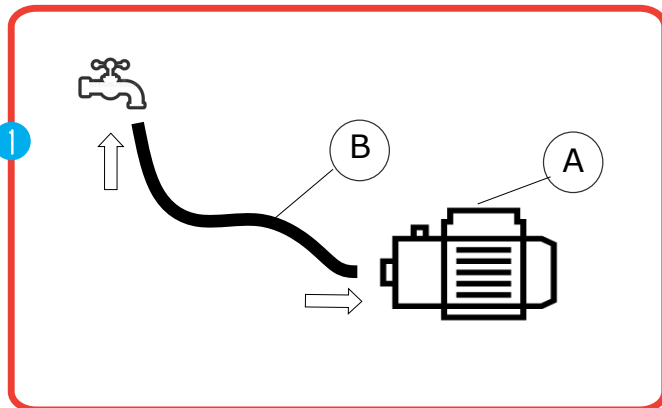
A - Booster Pump (1)



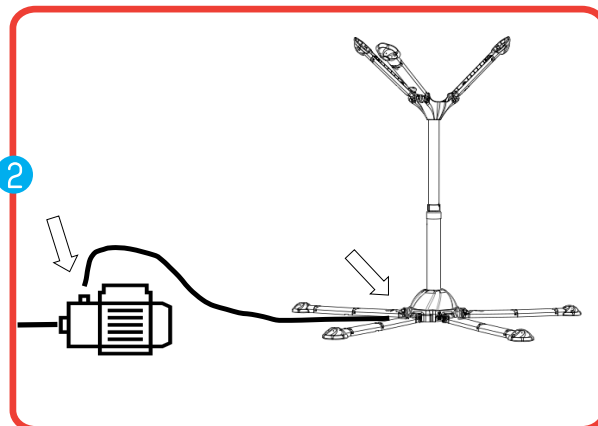
B - 3ft Attachment Hose (1)

Remove all parts from the shipping box and place Pump (A) on a flat, level ground surface. Tip: For ease of setup, place pump near water supply (spigot).

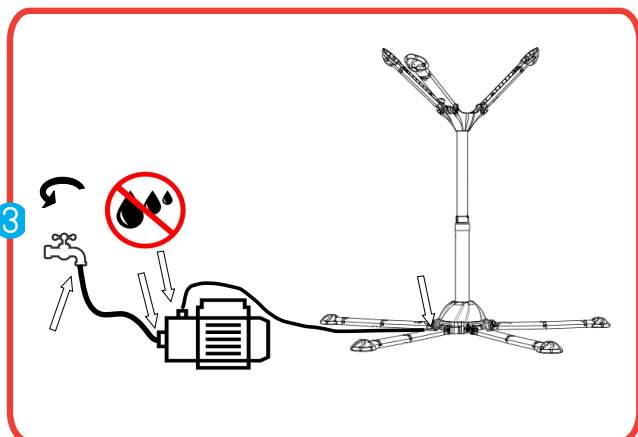
SETUP AND USE



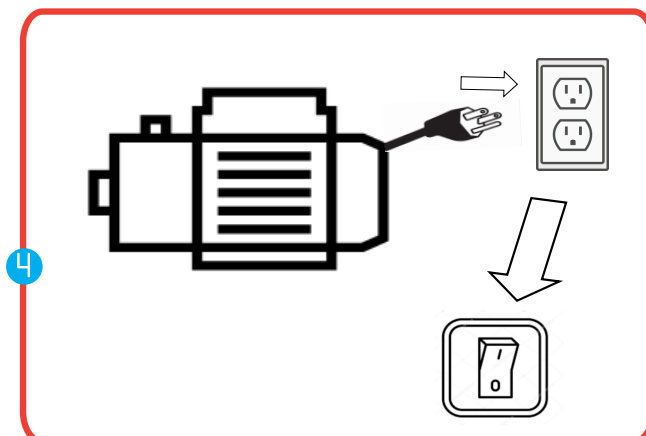
Connect one end of Attachment Hose (B) to the spigot, and the other end to the Pump (A) inlet port located on the side.



Connect garden hose to the Pump outlet port located on the top and then to the Aqua-Tower inlet fitting.



Turn on spigot to prime pump and check all 4 connections as indicated by arrows to make sure there are no leaks.



Plug pump into grounded electrical outlet, and turn on using power switch on pump.

STORAGE

Turn off and unplug pump before shutting off water. Disconnect hoses from pump and drain water inside pump before storing in a dry place. If the pump needs to be cleaned, wipe clean with wet rag. DO NOT apply pressurized water to (hose down) the exterior housing of pump.

WARRANTY

This product has a 1 year warranty to be free of defects in materials or workmanship. The warranty is valid only if the product has been assembled and maintained per the instructions. This warranty does not cover abuse, accident, cosmetic issues such as fading or scratches from normal wear, or any other cause not arising from defects in material and workmanship. For warranty service, replacement parts, and/or accessories, please visit our website at www.mysplash2o.com